

Alaska Department of Fish and Game

Habitat Section
Southeast Region



182-70-10100-2022-3011

ADDITION and ROUTE CORRECTION

Water body name:

Survey date: 9/14/2024

Quad: Yakutat C-4

Species & Lifestage: CO_r, Sr, DV_r, SH_r

Upper Reach Latitude: 59.581634 **Longitude:** -139.471394

Survey crew: CD, FC

Lower Reach Latitude: 59.767016 **Longitude:** -139.483181

Findings: We surveyed this uncataloged stream from the road using baited minnow traps and GPS and captured juvenile coho salmon and Dolly Varden (Figure 1). The stream is slow moving through a wetland and poorly defined under the current flow conditions (Table 1; Figures 2, 3). The culvert does not appear to be a barrier to fish passage and future investigation upstream is recommended.

Recommendations: Correct Stream No. 182-70-10100-2022-3011 in the anadromous waters catalog to reflect the field verified stream path and extend the upper reach to waypoint 1221 (Figure 4).

Nomination: Pending

Table 1.–182-70-10100 2022 Tributary 1 survey data.

Waypoint	Latitude	Longitude	Notes	Stream Width ft	Stream Substrate	Habitat Features	Gradient %	Sample Effort	Sample Results
1221	59.581634	-139.471394	Water ponded upstream of the road, flowing through overgrown 3ft CMP. Channel poorly defined downstream flowing through vegetation.	8-10	Fine Organic Large Gravel		0-1	MT	2 CO 1 DV
1222	59.581456	-139.470512	2ft CMP draining ponded wetland, wide vegetated channel downstream. Culvert losing connection to channel through willows.	10-12	Fine Organic		0-1	MT	1 SB



Figure 1.–Juvenile coho salmon captured at waypoint 1220.



Figure 2.—Water ponded downstream of the road.



Figure 3.—Stream channel downstream of the road.

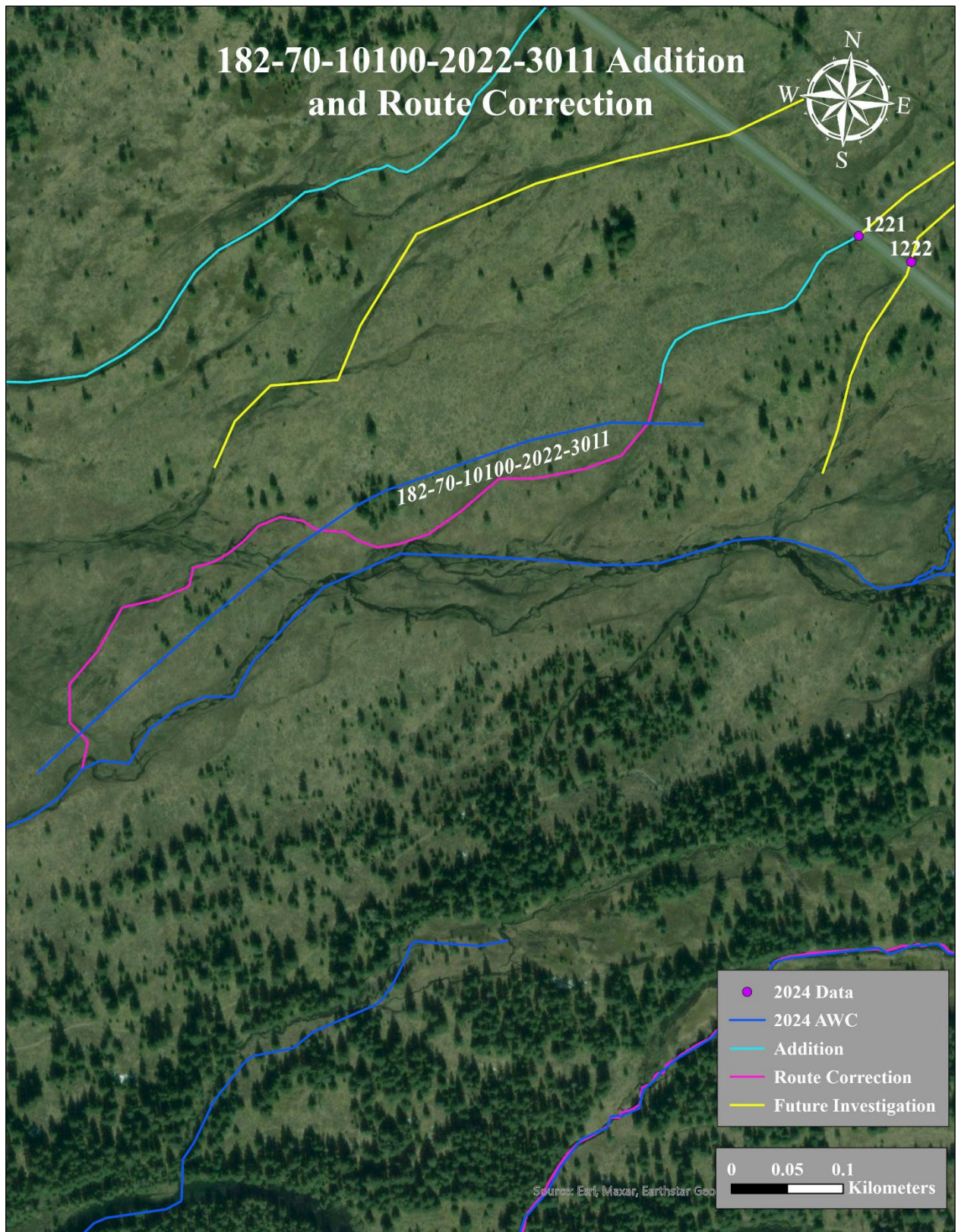


Figure 4.–182-70-10100-2022-3011 route correction and addition map.